



CS6910G

Camera evaluation software

Operation manual

Contents

1. Software outline	1
1-1 Description	1
1-2 Function	1
1-3 system requirements	1
2. Screen construction	2
2-1 Main screen	2
2-2 camera control window	4
2-3 Picture display window	4
2-4 Display log.	4

TOSHIBA TELI CORPORATION

The design and specification is subject to change without notice.

D4145951A

1. Software outline

1-1 Descriptions

It can evaluate the function of CS6910G.

1-2 Function

(1) Camera control function

Switch over video output format

Switch over and setting the shutter mode

(AE detection area, Manual shutter speed, random trigger)

Switch over and setting the white balance (Manual color temperature, R, B Gain)

Setting the analog pre-gain

Gamma control

Aperture control

Memory register control

Camera register read/write directly

(2) Picture display

Display video and still picture.

1-3 Recommended operating environment

(1) Applicable OS

Windows[®] XP SP2

GUI is using only English. (For English operating system)

(2) Applicable CPU and Chipset

Intel[®] Xeon[™] processor 2.4GHz or faster.

Intel[®] E7505 chipset or better.

(3) Memory

More than 512 MB (DDR PC2700)

(4) Gigabit Ethernet Adapter (LAN card or on board chip)

Intel 82540, 82541, 82545(*), 82546

(*): It may need to parameter adjustment

(5) Video card

AGP (DirectX 9.0 supported)

(6) Display

More than UXGA (1600x1200)

Color depth over 24bit.

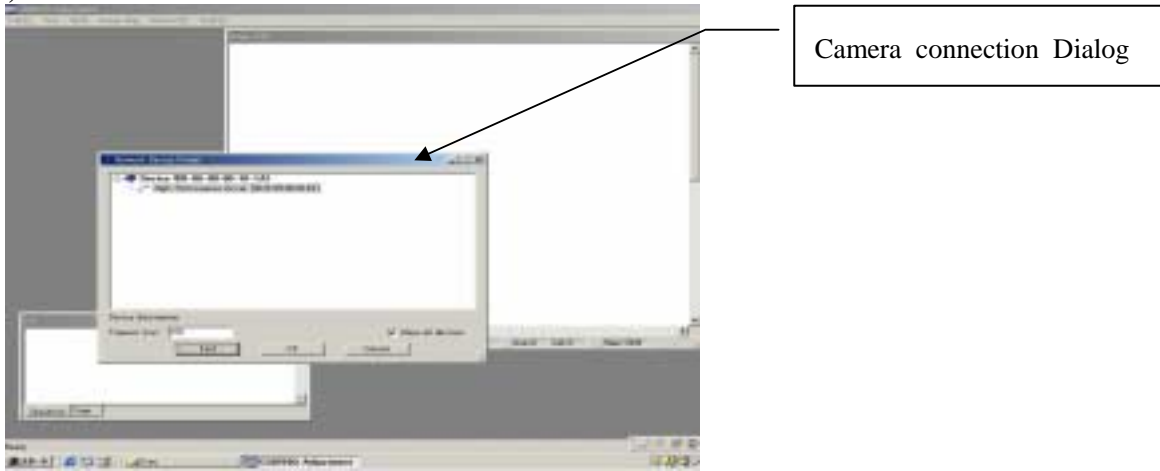
* Operation on all PCs is not guaranteed.

** All other brand and product names are registered trademarks or trademarks of their respective owners.

2. Screen construction

2-1 Main screen

(1) Initial screen

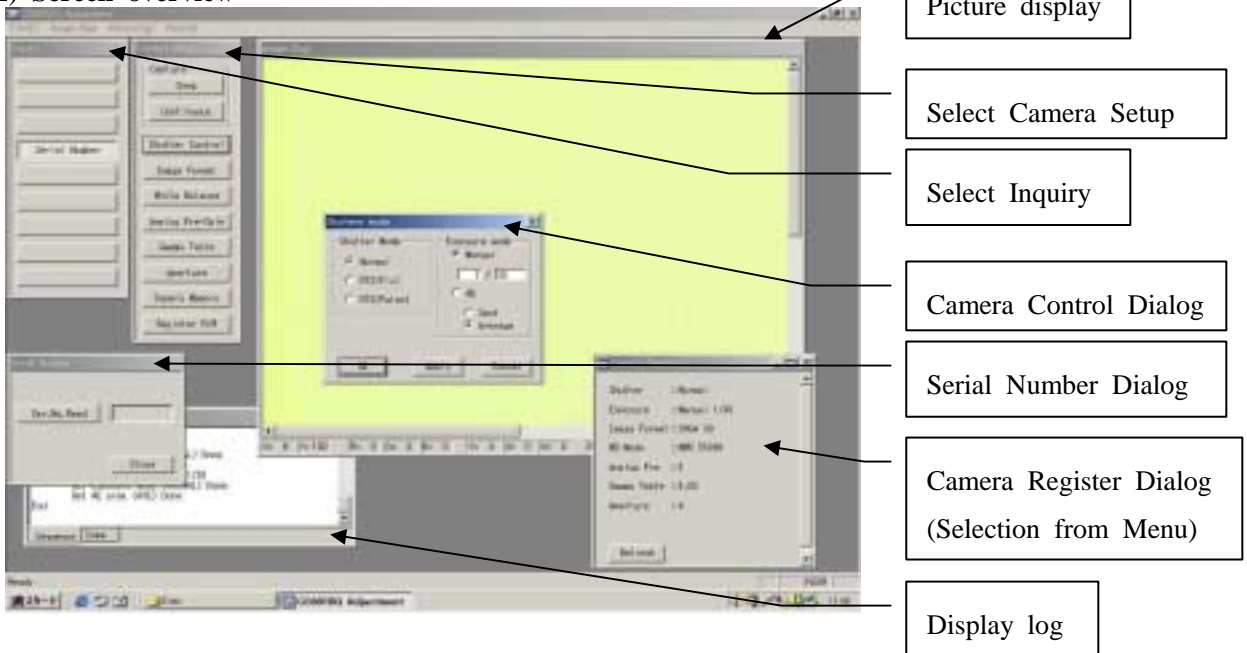


Connect the camera at initial screen

If you got caution of the dialog for undefined IP Address, at that time please select OK button in the Dialog and set IP Address at IP Address Dialog.

(Default IP Address is set at IP Address Dialog)

(2) Screen overview



(3) All Menu

File	
Image save	Save a picture of Picture display window (BMP)
Quit	Quit application
Image Mag	Change display magnification of still picture [%]
25%	
50%	
100%	
200%	
400%	
800%	
Window	Display control of window
Register	Display register values
Help	
Version	Display version information dialog

(4) Menu for File

1. **Image save** **Save still picture in picture display window (BMP)**
Save a picture of Picture display window to BMP (DIB) format.
Saved picture is taken picture at Snap button of Camera Setup.
Image is not saved when not taken at Snap. (e.g. during take picture at Continuous)
2. **Quit**
Quit the application.

(5) Menu for Image Mag

Change magnification of still picture.
You can set magnification from 25% to 800%
You can change magnification right and left click at mouse when mouse cursor in the picture display window.
Display video is 100% magnification only.

(6) Menu for Window

1. **Register**
Simple display of camera register

(7) Menu for Help

1. **Version** **Version information**
Display version information dialog.

2-2 Camera control window

(1) Select Camera Setup

You can access any Camera Control Dialog at select Camera Setup.

Camera Control Dialog is group categorized at each camera register.

(2) Select Inquiry

You can access Serial Number Dialog from Select Inquiry.

You can read out serial number at Serial Number Dialog.

2-3 Picture display window

Display captured picture from camera.

Scaling up / down when still picture.

2-4 Display log

Display communication log between camera.